

CELL :-A289 Rotor CELL NAME:- Traub MACHINE / STAGE :- Traub OPERATION : Back facing operation

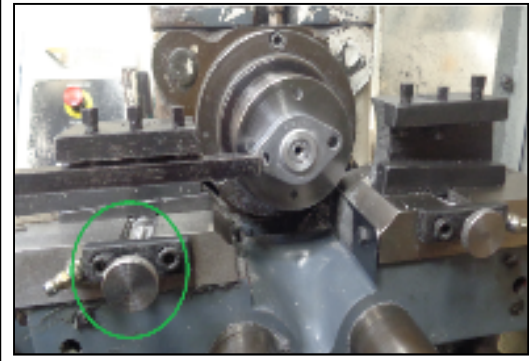
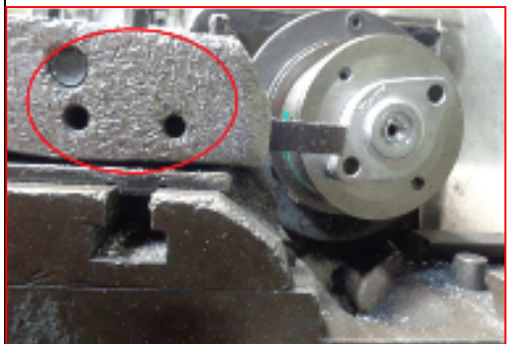
KAIZEN THEME :- To eliminate depth 1.2 variation in A157 body.

IDEA :- Scaling to be provided on Traub m/c to avoid setting rejection

WIDELY/DEEPLY:-

COUNTERMEASURE:-
1)Scaling to be provided on Traub m/c to avoid setting rejection

PROBLEM / PRESENT STATUS :-.



BENCHMARK	42 No.
TARGET	0 No.
KAIZEN START	15.11.2014
TARGET DATE	14.12.2014
KAIZEN FINISH	14.12.2014

TEAM MEMBERS :-
Mr. Nana ugle ,Vishal chowghule,
Mr. Vijay Walunj

- BENEFITS :-**
- To prevent Customer Complaint at customer end.
 - Reduce COPQ.

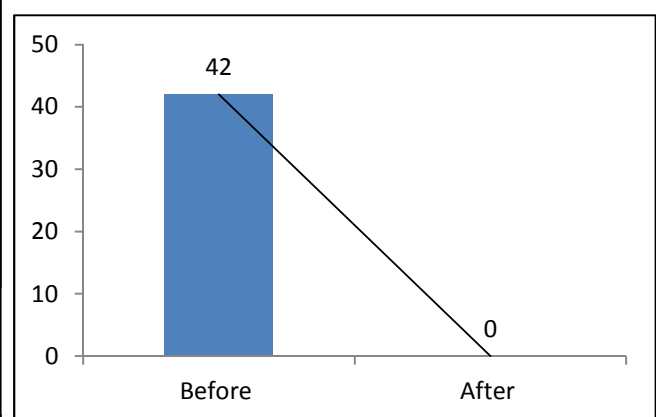
No Scaling to m/c to move tool holder on Z axis **BEFORE**

Tool post modified with scaling & operator can easily take offset & avoid rejection **AFTER**

KAIZEN SUSTENANCE

WHY - WHY ANALYSIS :-
Why 1 – A157 Body 1.2±0.1 u/s & actual 1.05 mm.
Why 2 – If operator found 1.2 depth oversize then operator hammering on tool post & then run m/c & check part if Ng again repeat that activity & rejection produce .
Why 3 – No scaling to troub m/c to move tool holder on Z axis.

RESULT :-



WHAT TO DO:- Check point added in sustenance check sheet .

HOW TO DO:- By Checking .

FREQUENCY :- Alternate day .

ROOT CAUSE:- No scaling to troub m/c to move tool holder on Z axis.

COST INCURRED FOR MAKING KAIZEN

MATERIAL COST IN RS	LABOUR COST IN RS	TOTAL COST IN RS
-----	-----	-----

REGISTRATION NO. & DATE:- 15.10.2014

SCOPE & PLAN FOR HORIZONTAL DEPLOYMENT

REGISTERED BY :- Ganesh Padwalkar

SR. NO.	CELL	TARGET	RESPONSIBILITY	STATUS
1	A319, A216	15.10.15	Nana Ugale	Completed

MANAGER'S SIGN :- Sunil kinkar